

West Coast Walks Fact Sheet

Donaghy's Lookout

Breathtaking Views of Franklin River Valley and Frenchman's Cap.

Basic Facts

Where:	Donaghy's Hill
Distance:	3 km
Walking Time:	40 Minutes
Surface:	Well constructed, suitable for standard footwear even when wet.
Walk Difficulty:	Easy

Getting There

The start of the track is located on the Lyell Highway (A10) between Franklin and Collingwood Rivers, 47km from Queenstown or 35km from Derwent Bridge.

The car park is on the South side of the highway and is well signposted.

Park entry fees apply. No pets, firearms or bikes.

Nearby Facilities

Picnic and toilet facilities are located at the Franklin River 9km away.

Things to See and Do

- Breathtaking views and spectacular scenery
- Franklin River and Frenchman's Cap
- Native wildlife
- Natural environment

The Walk

After an easy gradual climb the track emerges on a heath covered hill on which a lookout viewing platform is located.

The platform overlooks the junction of Franklin and Collingwood Rivers and offers breathtaking views of the Franklin River Valley and Frenchman's Cap.

The track passes through cool temperate rain forest and the trees are complemented by mosses and lichens which thrive in the cool, damp environment beneath the canopy.

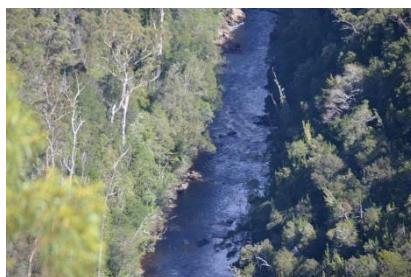
Walking Safety

Before embarking on a walk, please consider the following:

1. Where possible, stay on formed tracks;
2. Only attempt walks within your capabilities, if unsure please seek medical/professional advice;
3. Never jump or dive into natural waterways;
4. Watch your step, keep away from cliff edges, waterfalls and slippery rocks;
5. Carry a supply of drinking water;
6. Do not attempt to feed, touch, catch or pick up wildlife;
7. Enjoy your walk.



Frenchman's Cap



Franklin River



Donaghy's Lookout

West Coast Council, 11 Sticht Street, Queenstown
PO Box 63, Queenstown, TAS, 7467
Phone 03 6471 4700, Fax 03 6471 472

wcc@westcoast.tas.gov.au
westernwilderness.com.au

West Coast Council makes no guarantees concerning the appropriateness of any walking track referred to. Local conditions should always be sought prior to embarking on any walk. As some tracks referred to involve some risks and are strenuous to complete, Council takes no responsibility for any accidents howsoever occurring on the walking tracks referred to.